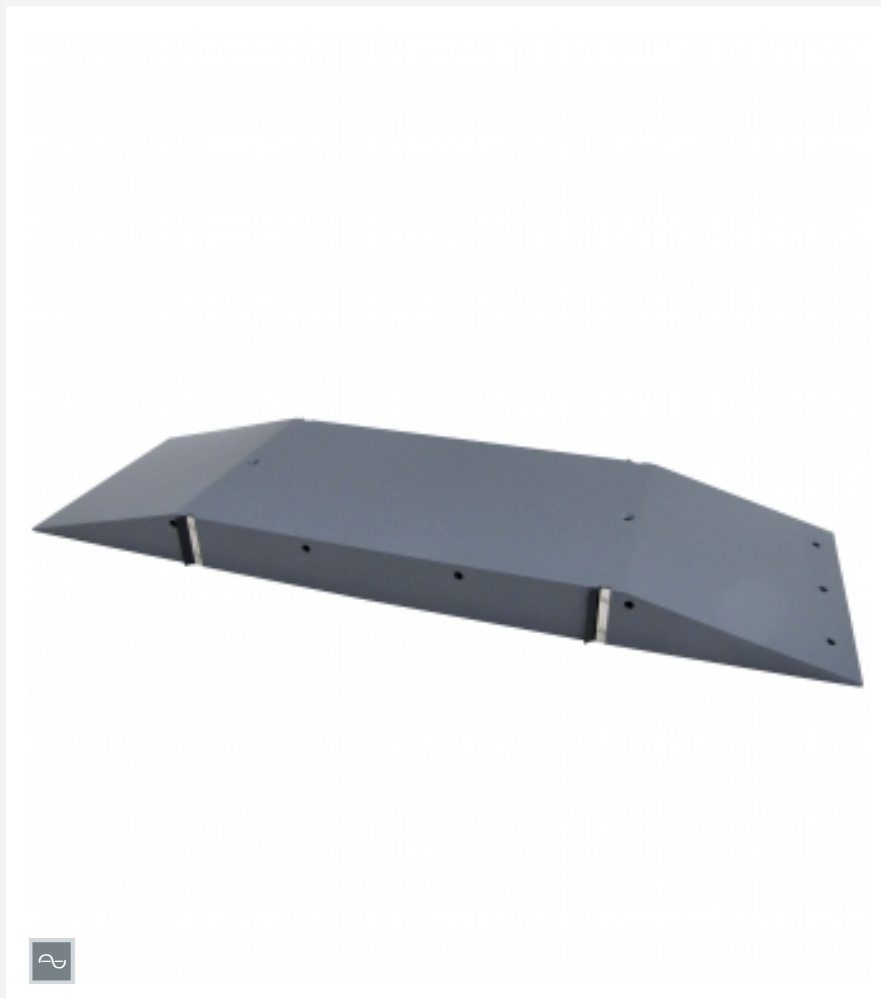


HM 163.44

Sill



Learning objectives/experiments

- behaviour of open channel flow at a reduction of flow cross-section

Specification

- [1] sill for experimental flume HM 163
- [2] sill with sealing lips
- [3] removable assembly aids

Technical data

Inclination of inlet/outlet element: approx. 15°
Material: PVC

LxWxH: 1270x404x70mm
Weight: approx. 17kg

Scope of delivery

- 1 sill
- 1 set of accessories
- 1 manual

Description

■ reduction of the flow cross-section in a flume

Sills are used to reduce the flume slope to decrease erosion processes at the flume bottom. Usually, they are designed as a step downstream. Fish ladders are often made of small sills. Bridge pier foundations may have the same effects as a sill.

Sills cause a reduction of the flow cross-section.

The behaviour of open channel flow at a reduction of the flow cross-section can be observed using the sill HM 163.44.